



Ideas in Action

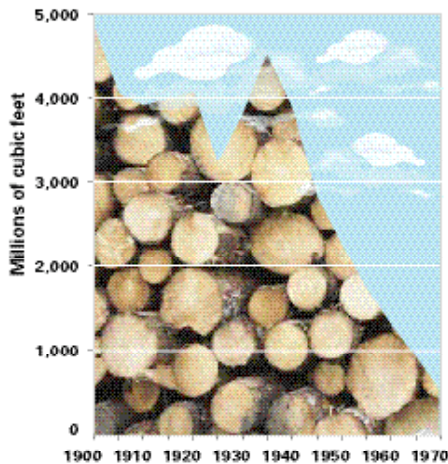
Environmental Charts and Graphs

Tenth Anniversary Edition

Index of Leading Environmental Indicators 2005

By Steven Hayward
With Michael De Alessi and Joel Schwartz

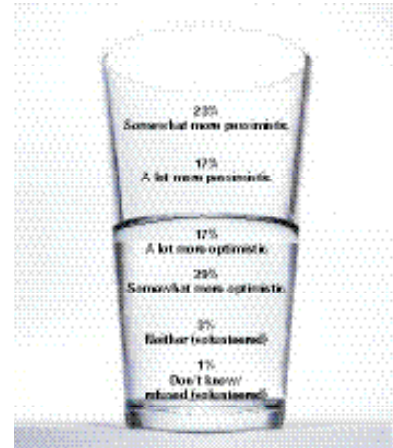
As oil, gas, and electricity became widely adopted, the use of wood for fuel began declining



Source: *Historical Statistics of the United States, Colonial Times to 1970*, U.S. Department of Commerce, Series L-96

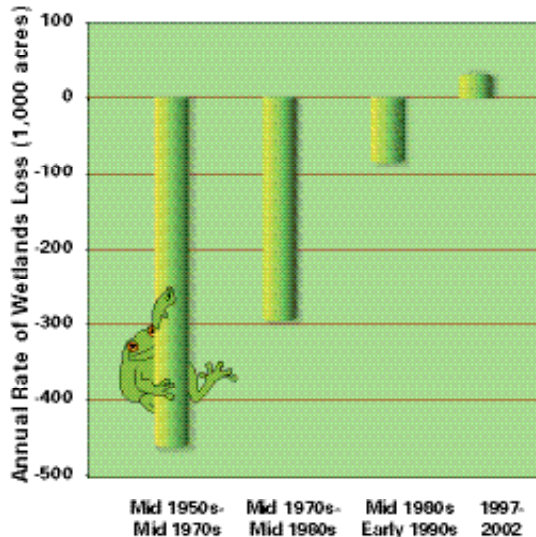
Are you optimistic or pessimistic about the state of our environment?

Based on the information you read and hear about the state of our environment and how it has changed over the past decade, are you more optimistic or more pessimistic about making progress in the next decade on improving environmental quality?



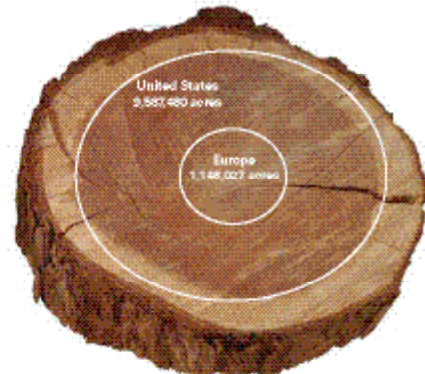
Source: Harris Interactive poll, April 2005

Wetlands on private land expanded by about 26,000 acres per year from 1997-2002



Source: Fish and Wildlife Service NRI

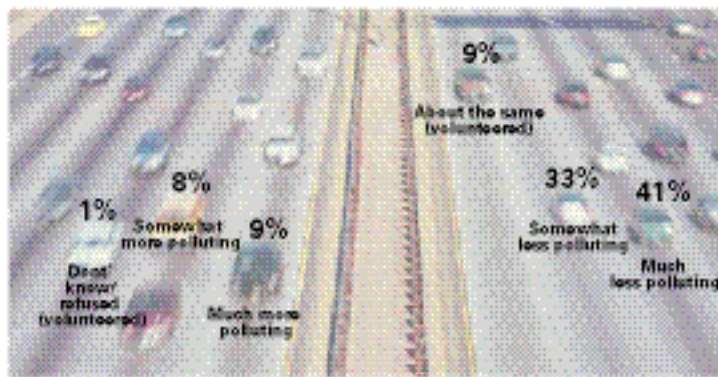
Net forest growth in Europe and the United States, 1990-2000



Source: U.N. FAO, *Global Forest Resource Assessment, 2000*

Are today's cars much more polluting than 25 years ago?

Thinking about cars and how they have changed, do you believe that today's cars are much more polluting, somewhat more polluting, somewhat less polluting, much less polluting, or about the same as cars from 25 years ago?



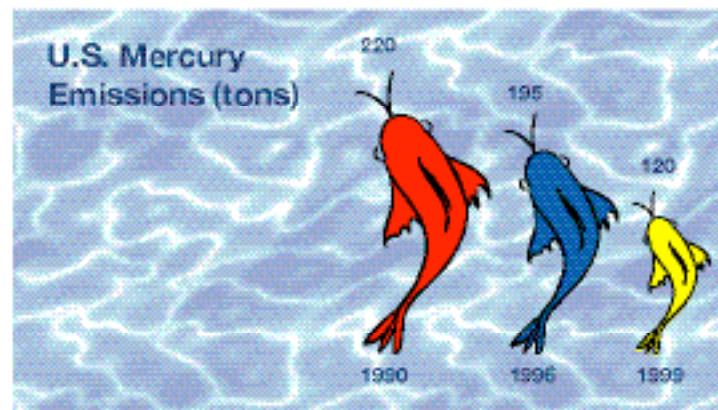
Source: Harris Interactive poll, April 2005

The core air quality indicators have been falling since the mid-1970s



Source: U.S. Environmental Protection Agency

Most of the 45-percent decline in mercury between 1990-1999 came from a phase-out of municipal and medical waste incineration



Source: U.S. Environmental Protection Agency

The decline in the sea lion population cannot be traced to a single cause, underscoring the need for an ecosystem-based approach for protecting the animals



Source: National Oceanic and Atmospheric Administrations